

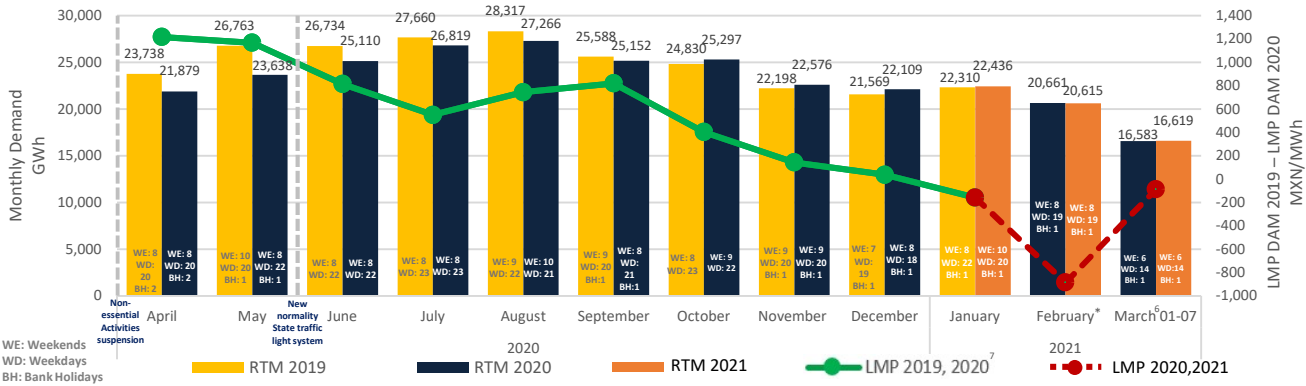
Market Summary

- On March 19th, was published on CONAMER's website the agreement that suspends all the effects and consequences of the "Decree amending and adding various provisions of the Electricity Industry Law", published in the DOF on March 19th, 2021.
- On March 08th, was announced on SIM's website that the Wholesale Electricity Market's Electronic Parts Office (OPE) will be operational on March 22nd, 2021.

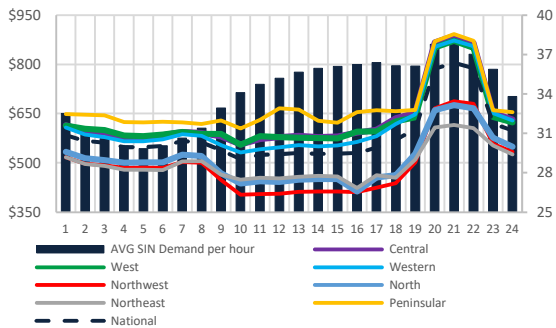
Comparative analysis of electrical energy demand in RTM¹ between 2021, 2020 and 2019 for SIN²

Month	RTM Demand 2021 [GWh]	Monthly demand variation 2021 ³	RTM demand 2020 [GWh]	Monthly demand variation 2020 ⁴	Demand variation 2021/2020
January	22,436	↑ 1.5%	22,310	↑ 3.4%	0.6%
February	20,615	↑ 1.7%	20,661	↑ 2.5%	-0.2%
March 1 - 07	16,619	↑ 7.5%	16,583	↑ 7.0%	0.2%

Month	RTM Demand 2020 [GWh]	Monthly demand variation 2020 ⁵	RTM demand 2019 [GWh]	Monthly demand variation 2019 ⁶	Demand variation 2020/2019
January	22,310	↑ 3.4%	21,983	↑ 3.6%	1.5%
February ⁷	20,661	↑ 2.5%	20,798	↑ 4.7%	-0.7%
March	24,072	↑ 5.2%	23,620	↑ 2.6%	1.9%
April	21,879	↓ -6.1%	23,738	↑ 3.8%	-7.8%
May	23,638	↑ 4.6%	26,763	↑ 9.1%	-11.7%
June	25,110	↑ 9.8%	26,734	↑ 3.2%	-6.1%
July	26,819	↑ 3.4%	27,660	↑ 0.1%	-3.0%
August	27,266	↑ 1.7%	28,317	↑ 2.4%	-3.7%
September	25,152	↓ -4.7%	25,588	↓ -6.6%	-1.7%
October	25,297	↓ -2.7%	24,830	↓ -6.1%	1.9%
November	22,576	↓ -7.8%	22,198	↓ -7.6%	1.7%
December	22,109	↓ -5.2%	21,569	↓ -6.0%	2.5%
Total	286,887		293,797		-2.4%

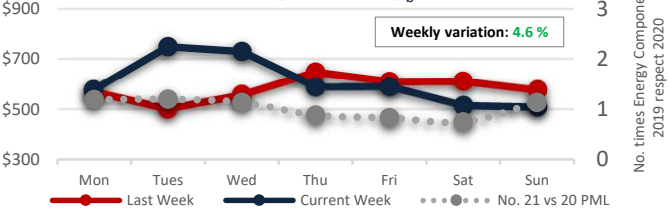


Regional⁸ hourly LMP week March 15th to 21st (MXN/MWh)_a

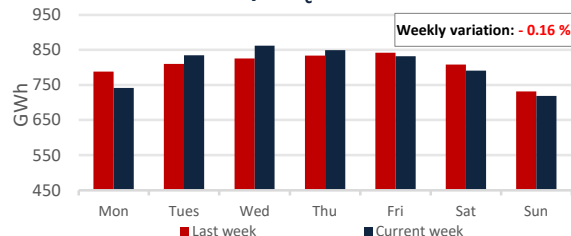


	LMP from Monday to Friday from February 15th to 19th				LMP (maximum price hours) ⁹ from Monday to Friday from February 15th to 19th				LMP (minimum price hours) ¹⁰ from Monday to Friday from February 15th to 19th			
	Range	Average X	Standard Deviation n σ	Variation Coefficient V.C.= σ/X	Range	Average X	Standard Deviation n σ	Variation Coefficient V.C.= σ/X	Range	Average X	Standard Deviation n σ	Variation Coefficient V.C.= σ/X
National	833	622	154	25%	787	678	200	30%	167	565	31	6%
Central	1,092	674	189	28%	1,032	737	251	34%	180	611	36	6%
West	1,086	674	189	28%	1,047	734	251	34%	223	614	41	7%
Western	1,035	653	185	28%	981	721	241	33%	180	585	35	6%
Northwest	727	511	124	24%	706	563	155	28%	175	460	43	9%
North	620	534	101	19%	591	578	123	21%	173	490	37	8%
Northeast	538	523	80	15%	514	557	100	18%	148	489	28	6%
Peninsular	1,093	729	188	26%	1,070	781	249	32%	372	677	58	9%
BCA	1,239	447	206	46%	1,233	492	227	46%	626	402	173	43%
BCS	1,300	2,253	341	15%	1,182	2,410	299	12%	907	2,096	307	15%

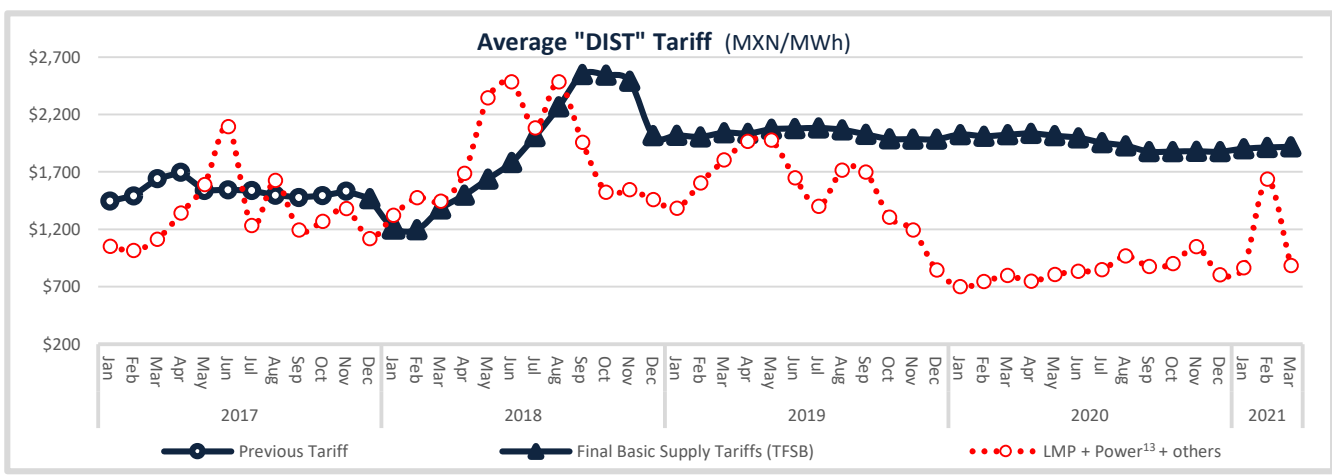
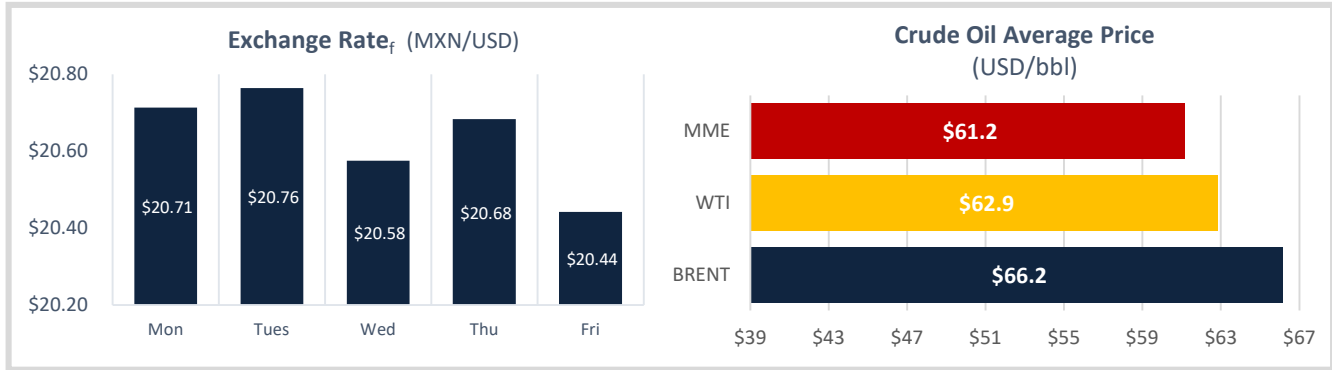
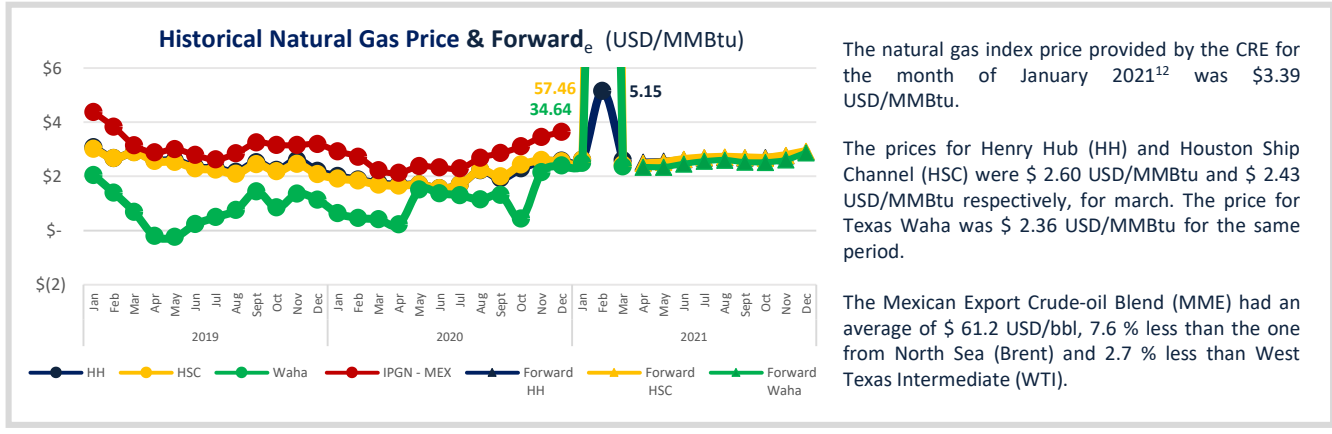
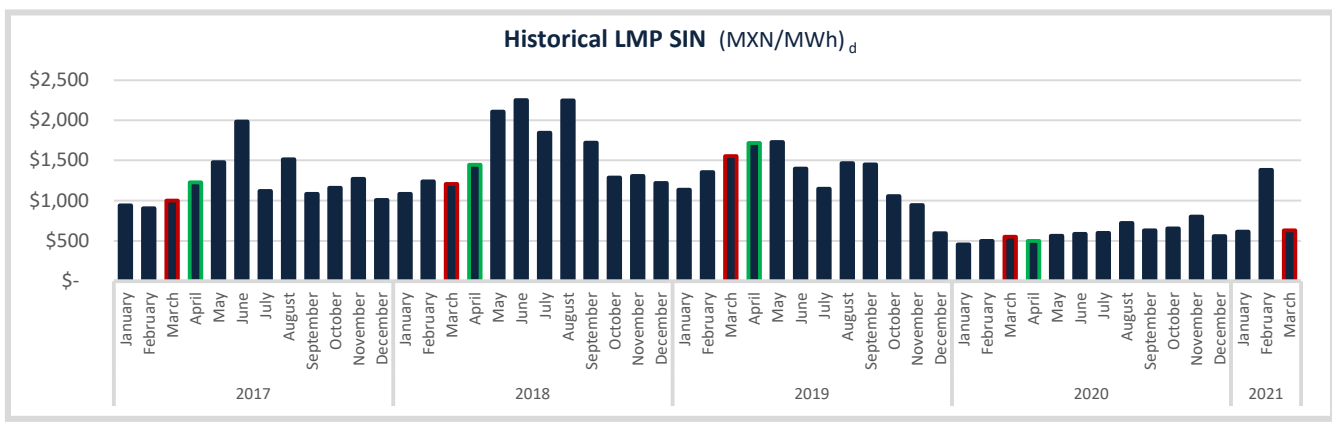
LMP Energy Component SIN¹¹ Weekly (MXN/MWh)_b



Weekly SIN_c RTM Demand



1: Real Time Market
 2: National Interconnected System
 3: Average Monthly Demand
 4: Only 28 days for February 2020 are considered
 5: Only 28 days for February 2020 are considered
 6: Only 28 days for February 2020 are considered
 7: Only 28 days for February 2020 are considered
 8: Data from the National Interconnected System (not 06CO2-3-45)
 9: Average LMP for the maximum hours, including the 12 hours with the highest price (from HE. 16 to HE. 3)
 10: Average LMP for the minimum hours, including the 6 hours with the lowest price (from HE. 4 to HE. 11)
 11: Local Marginal Price (PML in Spanish)
 Source: demand: <https://www.cenace.gob.mx/Grafica/Demanda>
 System real demand for withdrawals: <https://www.cenace.gob.mx/SIM/MVISTA/REPORTES/DemandasRealSist.aspx>



Disclaimer: "The information contained in this Newsletter is a compilation of data obtained by Fisterra Energy that has not been independently verified. Therefore, none of the companies of Fisterra Energy Group executes or grants any representation or guarantee, expressed or implied, in relation to the accuracy or integrity of such information, so the receiver must always make his own evaluations and analyses."