

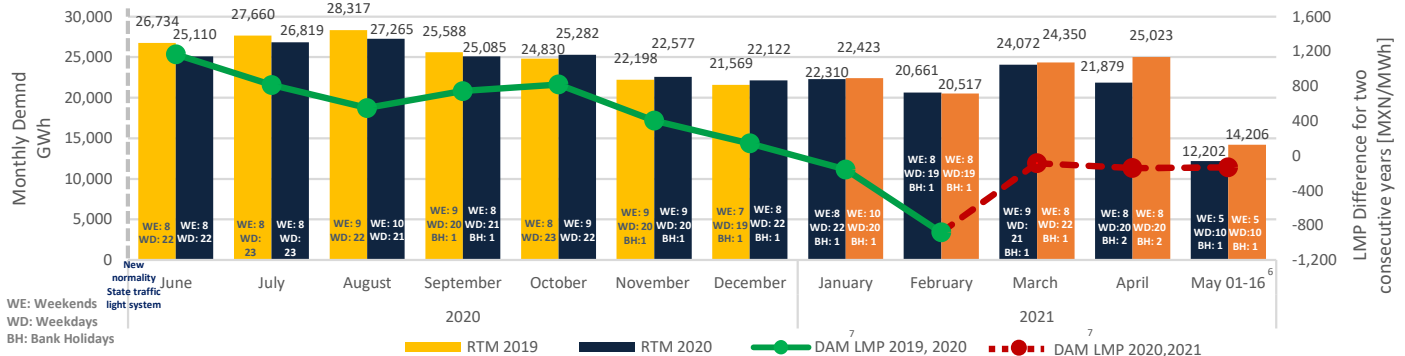
Market Summary

- On May 14th was published on the official SENER's website the statistical summary for April
- On May 13th was published on the DOF an accord in which the "NOM-001-CRE/SCFI-2019 for electric energy measurement systems and transformers, meteorological specifications, test methods and conformity assessment procedures" is modified.
- On May 10th was published on the DOF a modification to CFE's Organic Statute.

Comparative analysis of electrical energy demand in RTM¹ between 2021, 2020 and 2019 for SIN²

Month	RTM Demand 2021 [GWh]	Monthly demand variation 2021 ³	RTM demand 2020 [GWh]	Monthly demand variation 2020 ⁴	Demand variation 2021/2020
January	22,423	↑ 3.4%	22,310	↑ 3.4%	0.5%
February	20,517	↑ 2.5%	20,661	↑ 2.5%	-0.7%
March	24,350	↑ 7.2%	24,072	↑ 5.2%	1.2%
April	25,023	↑ 6.2%	21,879	↓ -6.1%	14.4%
May 1-16	14,206	↑ 6.5%	12,202	↑ 4.6%	16.4%
Total	106,519		101,123		5.34%

Month	RTM Demand 2020 [GWh]	Monthly demand variation 2020 ³	RTM demand 2019 [GWh]	Monthly demand variation 2019 ⁴	Demand variation 2020/2019
January	22,310	↑ 3.4%	21,983	↑ 3.6%	1.5%
February ⁵	20,661	↑ 2.5%	20,798	↑ 4.7%	-0.7%
March	24,072	↑ 5.2%	23,620	↑ 2.6%	1.9%
April	21,879	↓ -6.1%	23,738	↑ 3.8%	-7.8%
May	23,638	↑ 4.6%	26,763	↑ 9.1%	-11.7%
June	25,110	↑ 9.8%	26,734	↑ 3.2%	-6.1%
July	26,819	↑ 3.4%	27,660	↑ 0.1%	-3.0%
August	27,265	↑ 1.7%	28,317	↑ 2.4%	-3.7%
September	25,085	↓ -4.9%	25,588	↓ -6.6%	-2.0%
October	25,282	↓ -2.5%	24,830	↓ -6.1%	1.8%
November	22,577	↓ -7.7%	22,198	↓ -7.6%	1.7%
December	22,122	↓ -5.2%	21,569	↓ -6.0%	2.6%
Total	286,819		293,797		-2.4%

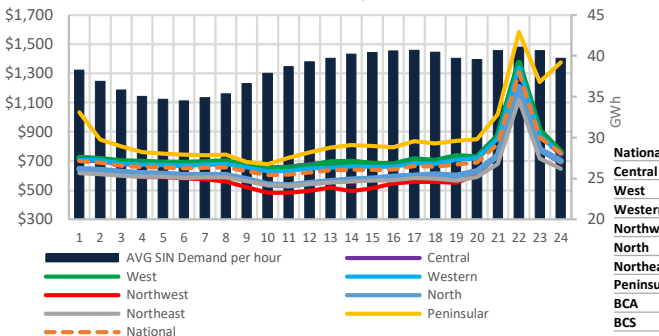


*The February demand of 2021 has been influenced by the National Alert situation declared from the 13th to the 20th.

1: Real Time Market
 2: National Interconnected System
 3: Average LMP for the maximum hours, including the 12 hours with the highest prices from HE 16 to HE 3
 4: Only 28 days for February 2020 are considered
 5: The data from May 4th, 2020 and 2021, forward is from the Demand Graph. <https://www.cenace.gob.mx/Graficos/Demanda.aspx>
 6: The data from May 4th, 2020 and 2021, forward is from the Demand Graph. <https://www.cenace.gob.mx/Graficos/Demanda.aspx>
 7: Day Ahead Market

Source : Real demand (Energy Withdrawal): <https://www.cenace.gob.mx/SIM/VISTA/REPORTES/DemandaRealList.aspx>

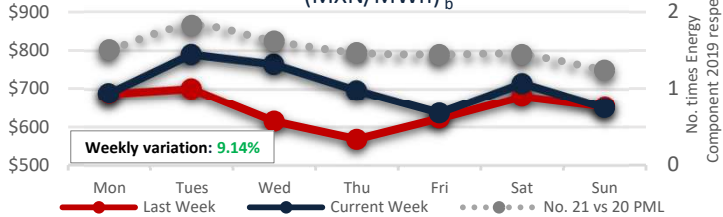
Regional⁸ hourly LMP week May 10th to 16th (MXN/MWh)_a



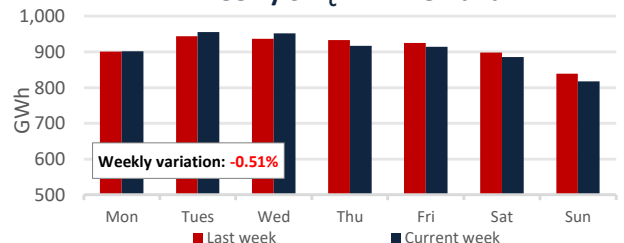
	LMP from Monday to Friday from May 10th to 14th				LMP (maximum price hours) ⁹ from Monday to Friday from May 10th to 14th				LMP (minimum price hours) ¹⁰ from Monday to Friday from May 10th to 14th			
	Range	Average X	Standard Deviation σ	Variation Coefficient V.C.=σ/X	Range	Average X	Standard Deviation σ	Variation Coefficient V.C.=σ/X	Range	Average X	Standard Deviation σ	Variation Coefficient V.C.=σ/X
National	MXN 1,583 - 714	714	178	25%	MXN 1,509 - 843	843	320	38%	MXN 200 - 660	660	51	8%
Central	MXN 1,608 - 743	743	183	25%	MXN 1,565 - 856	856	334	39%	MXN 290 - 707	707	72	10%
West	MXN 1,651 - 748	748	188	25%	MXN 1,600 - 866	866	340	39%	MXN 301 - 705	705	74	11%
Western	MXN 1,591 - 731	731	179	24%	MXN 1,533 - 848	848	328	39%	MXN 184 - 683	683	51	7%
Northwest	MXN 1,518 - 613	613	178	29%	MXN 1,423 - 767	767	301	39%	MXN 175 - 529	529	43	8%
North	MXN 1,513 - 660	660	171	26%	MXN 1,420 - 794	794	304	38%	MXN 127 - 591	591	32	5%
Northeast	MXN 1,442 - 641	641	161	25%	MXN 1,403 - 751	751	292	39%	MXN 158 - 591	591	39	7%
Peninsular	MXN 1,841 - 897	897	296	33%	MXN 1,657 - 1,199	1,199	458	38%	MXN 415 - 778	778	111	14%
BCA	MXN 2,256 - 680	680	329	48%	MXN 1,713 - 782	782	349	45%	MXN 920 - 618	618	220	36%
BCS	MXN 4,347 - 4,907	4,907	802	16%	MXN 2,825 - 5,725	5,725	690	12%	MXN 2,617 - 4,305	4,305	622	14%

8: Data from the National Interconnected System (not 08COZ-34.5)
 9: Average LMP for the maximum hours, including the 12 hours with the highest prices from HE 16 to HE 3
 10: Average LMP for the minimum hours, including the 6 hours with the lowest price (from HE 4 to HE 11.5)

LMP Energy Component SIN¹¹ Weekly (MXN/MWh)_b

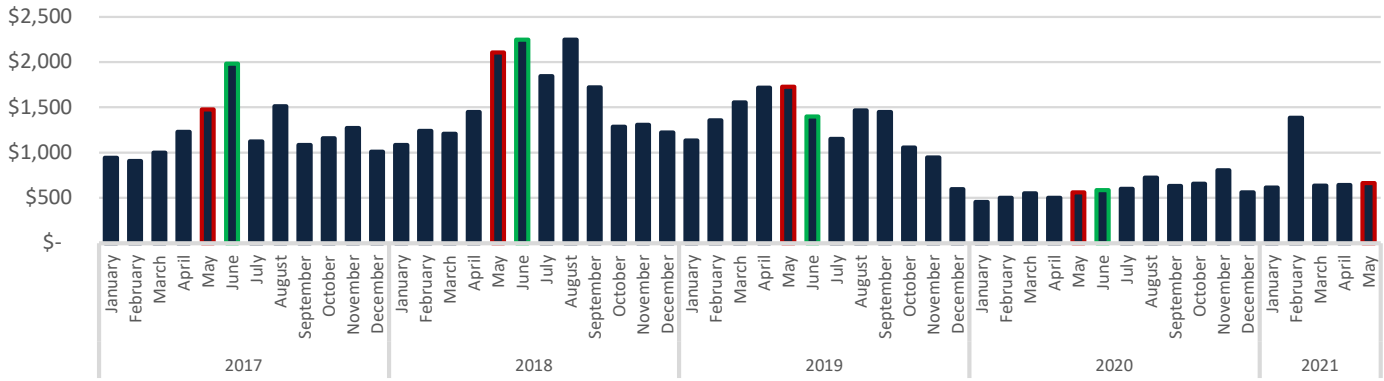


Weekly SIN_c RTM Demand

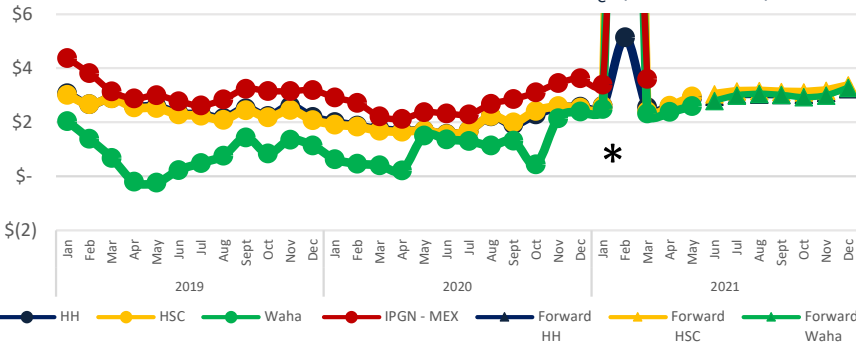


11: Local Marginal Price (PML in Spanish).
 c: source: demand: <https://www.cenace.gob.mx/Graficos/Demanda>. System real demand for withdrawals: <https://www.cenace.gob.mx/SIM/VISTA/REPORTES/DemandaRealList.aspx>

Historical LMP SIN (MXN/MWh)_d



Historical Natural Gas Price & Forward_e (USD/MMBtu)



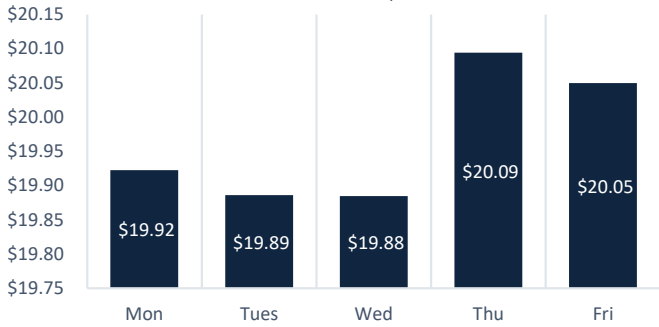
The natural gas index price provided by the CRE for the month of March 2021¹² was \$3.61 USD/MMBtu.

The prices for Henry Hub (HH) and Houston Ship Channel (HSC) were \$ 2.90 USD/MMBtu and \$ 2.96 USD/MMBtu respectively, for may. The price for Texas Waha was \$ 2.60 USD/MMBtu for the same period.

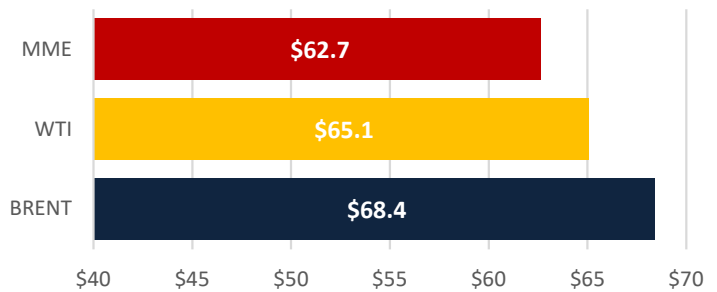
The Mexican Export Crude-oil Blend (MME) had an average of \$ 62.7 USD/bbl, 8.4 % less than the one from North Sea (Brent) and 3.7 % less than West Texas Intermediate (WTI).

*feb-21	Average (\$/MMBtu)	Max (\$/MMBtu)	Min (USD/MMBtu)
Waha	34.64	208.79	2.38
HSC	57.46	400	2.43

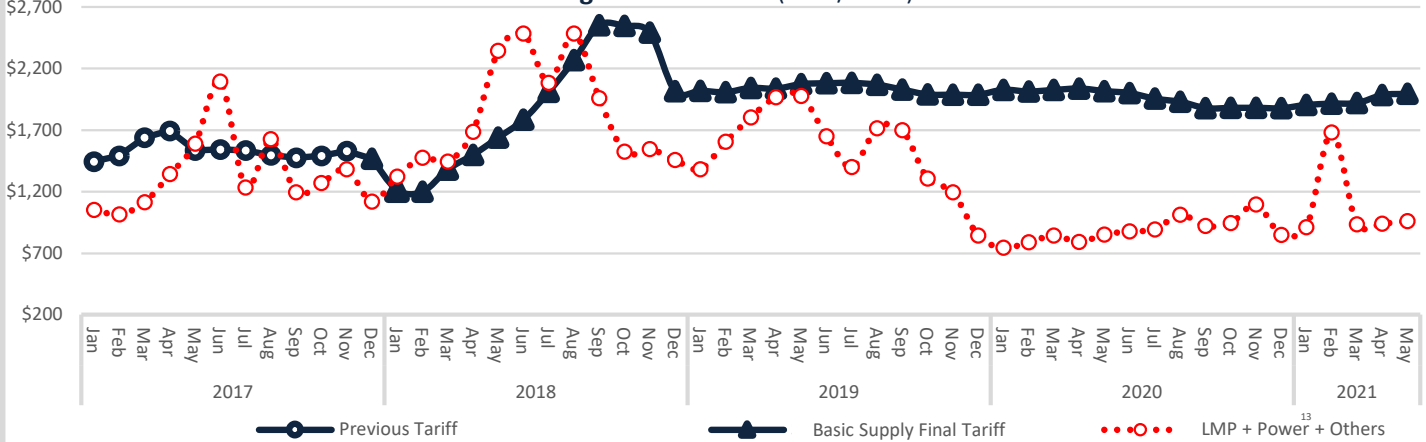
Exchange Rate_f (MXN/USD)



Crude Oil Average Price (USD/bbl)



Average "DIST" Tariff (MXN/MWh)



Disclaimer: "The information contained in this Newsletter is a compilation of data obtained by Fistera Energy that has not been independently verified. Therefore, none of the companies of Fistera Energy Group executes or grants any representation or guarantee, expressed or implied, in relation to the accuracy or integrity of such information, so the receiver must always make his own evaluations and analyses."

CDMX

Edificio Terret. Torre Norte
Miguel de Cervantes Saavedra 301
Col. Granada, 11520
Tel: +52 55 5125 1670
info@fisteraenergy.com

12: By this time, the new IPGN has not been published for the subsequent months e: <http://www.snl.com>

f: <http://www.banxico.org.mx/portal-mercado-cambiaro/index.html>

13: From Power Market Price 2017, 2018 & 2019. (The Capacity Balancing Market 2020 results are considered for 2021).