

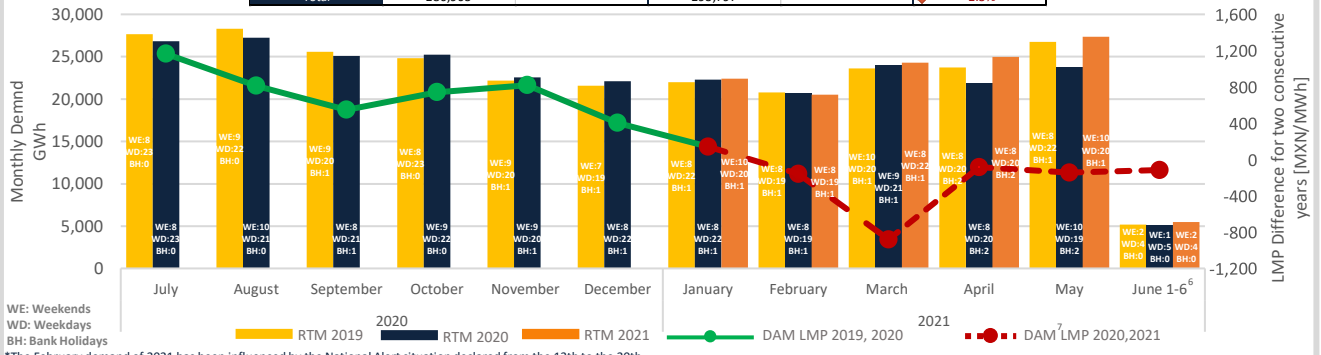
### Market Summary

- The Final Basic Supply Tariff for June has been published, this presents an average increase of 3.45% regarding May 2021. Regulated Tariffs on the first semester shows an average accumulated increase of 9.53%.
- On June 4<sup>th</sup> was published on the DOF, an agreement which stabilishes the publication of the draft PROY-NOM-018-CRE-2020 for Electrical Installations - National Transmission Network and General Distribution Networks- Safety requirements.
- On June 3<sup>th</sup> was published on CFE's official website, an announcement which informs the establishment of workshops to get the national content for the Investment Priority Projects for the Commission in order to develop six Power plants.

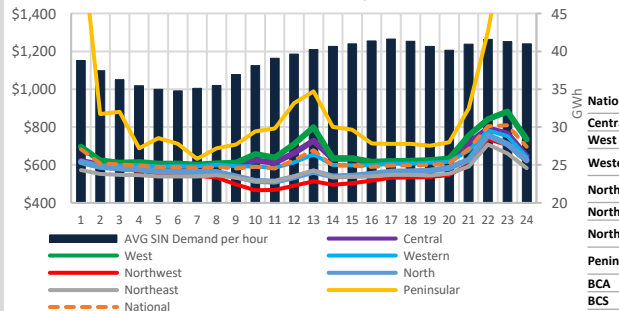
### Comparative analysis of electrical energy demand in RTM<sup>1</sup> between 2021, 2020 and 2019 for SIN<sup>2</sup>

Month	RTM Demand 2021 [GWh]	Monthly demand variation 2021 <sup>3</sup>	RTM demand 2020 [GWh]	Monthly demand variation 2020 <sup>4</sup>	Demand variation 2021/2020
January	22,416	↑ 1.3%	22,310	↑ 3.4%	↑ 0.5%
February	20,515	↑ 1.3%	20,661	↑ 2.5%	↓ -0.7%
March	24,314	↑ 7.1%	24,072	↑ 5.2%	↑ 1.0%
April	24,996	↑ 6.2%	21,879	↓ -6.1%	↑ 14.2%
May	27,369	↑ 6.0%	23,819	↑ 5.4%	↑ 14.9%
June 01-06 <sup>6</sup>	5,496	↑ 3.8%	5,079	↑ 10.2%	↑ 8.2%
<b>Total</b>	<b>125,107</b>		<b>117,820</b>		<b>↑ 6.18%</b>

Month	RTM Demand 2020 [GWh]	Monthly demand variation 2020 <sup>3</sup>	RTM demand 2019 [GWh]	Monthly demand variation 2019 <sup>4</sup>	Demand variation 2020/2019
January	22,310	↑ 3.4%	21,983	↑ 3.6%	↑ 1.5%
February <sup>5</sup>	20,661	↑ 2.5%	20,798	↑ 4.7%	↓ -0.7%
March	24,072	↑ 5.2%	23,620	↑ 2.6%	↑ 1.9%
April	21,879	↓ -6.1%	23,738	↑ 3.8%	↓ -7.8%
May	23,819	↑ 5.4%	26,763	↑ 9.1%	↓ -11.0%
June	25,110	↑ 8.9%	26,734	↑ 3.2%	↓ -6.1%
July	26,819	↑ 3.4%	27,660	↑ 0.1%	↓ -3.0%
August	27,265	↑ 1.7%	28,317	↑ 2.4%	↓ -3.7%
September	25,085	↓ -4.9%	25,588	↓ -6.6%	↓ -2.0%
October	25,247	↓ -2.6%	24,830	↓ -6.1%	↑ 1.7%
November	22,577	↓ -7.6%	22,198	↓ -7.6%	↑ 1.7%
December	22,122	↓ -5.2%	21,569	↓ -6.0%	↑ 2.6%
<b>Total</b>	<b>286,965</b>		<b>293,797</b>		<b>↓ -2.3%</b>

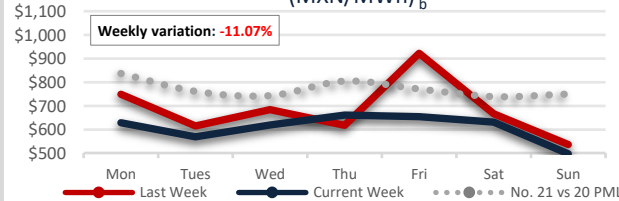


### Regional<sup>8</sup> hourly LMP week May 31<sup>st</sup> to June 06<sup>th</sup> (MXN/MWh)<sub>a</sub>

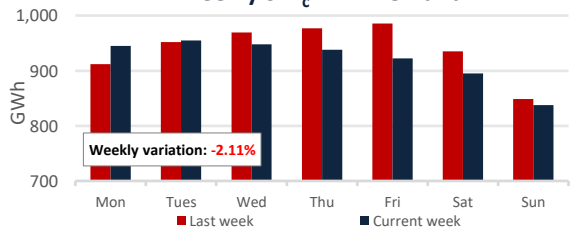


	LMP from Monday to Friday from May 31st to June 04th				LMP (maximum price hours) <sup>9</sup> from Monday to Friday from May 31st to June 04th				LMP (minimum price hours) <sup>10</sup> from Monday to Friday from May 31st to June 04th			
	Range	Average X	Standard Deviation σ	Variation Coefficient V.C.= σ/X	Range	Average X	Standard Deviation σ	Variation Coefficient V.C.= σ/X	Range	Average X	Standard Deviation σ	Variation Coefficient V.C.= σ/X
<b>National</b>	730	637	85	13%	722	654	101	16%	287	620	61	10%
<b>Central</b>	727	651	91	14%	727	660	101	15%	334	643	79	12%
<b>West</b>	726	662	99	15%	715	668	101	15%	463	657	99	15%
<b>Western</b>	734	642	83	13%	731	657	101	15%	309	626	56	9%
<b>Northwest</b>	818	577	90	16%	766	617	109	18%	149	537	38	7%
<b>North</b>	828	607	87	14%	784	640	108	17%	229	574	38	7%
<b>Northeast</b>	696	581	77	13%	682	601	95	16%	269	561	46	8%
<b>Peninsular</b>	1,249	787	171	22%	1,231	797	183	23%	623	776	160	21%
<b>BCA</b>	3,639	661	437	66%	2,329	828	405	49%	2,034	494	405	82%
<b>BCS</b>	2,173	4,782	534	11%	1,519	5,156	354	7%	1,535	4,409	408	9%

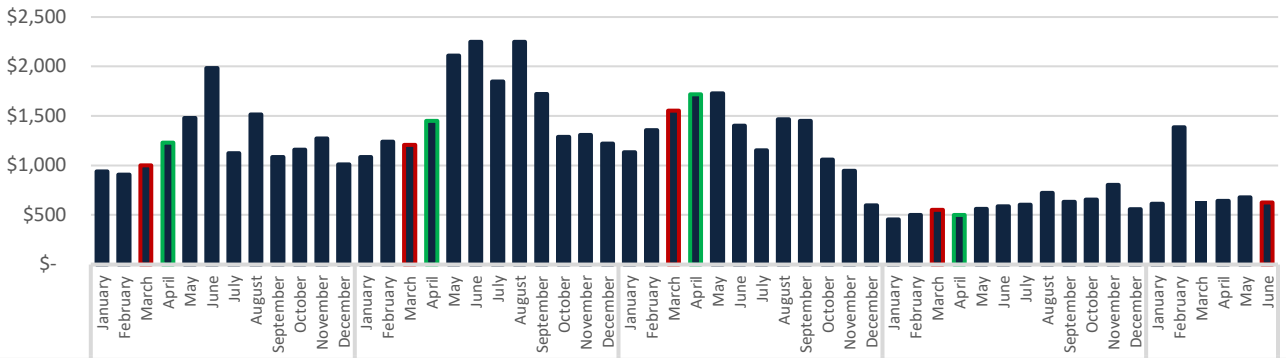
### LMP Energy Component SIN<sup>11</sup> Weekly (MXN/MWh)<sub>b</sub>



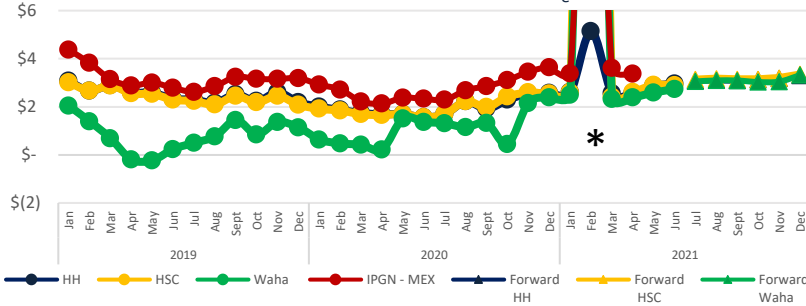
### Weekly SIN<sub>c</sub> RTM Demand



### Historical LMP SIN (MXN/MWh)<sub>d</sub>



### Historical Natural Gas Price & Forward<sub>e</sub> (USD/MMBtu)



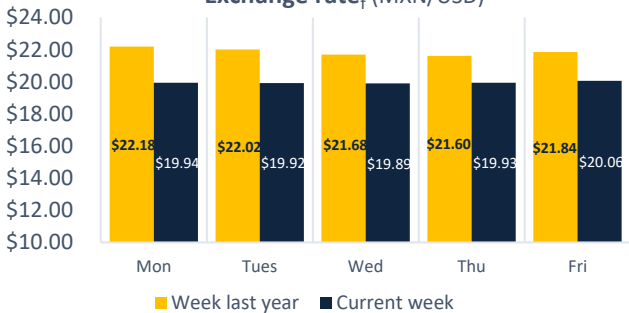
The natural gas index price provided by the CRE for the month of April 2021<sup>12</sup> was \$3.38 USD/MMBtu.

The prices for Henry Hub (HH) and Houston Ship Channel (HSC) were \$ 2.97 USD/MMBtu and \$ 2.90 USD/MMBtu respectively, for may. The price for Texas Waha was \$ 2.73 USD/MMBtu for the same period.

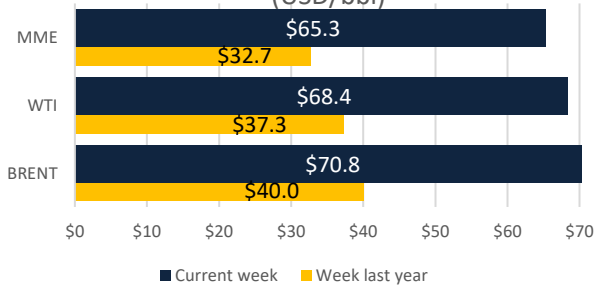
The Mexican Export Crude-oil Blend (MME) had an average of \$ 65.3 USD/bbl, 7.8 % less than the one from North Sea (Brent) and 4.5 % less than West Texas Intermediate (WTI).

*feb-21	Average (\$/MMBtu)	Max (\$/MMBtu)	Min (USD/MMBtu)
Waha	34.64	208.79	2.38
HSC	57.46	400	2.43

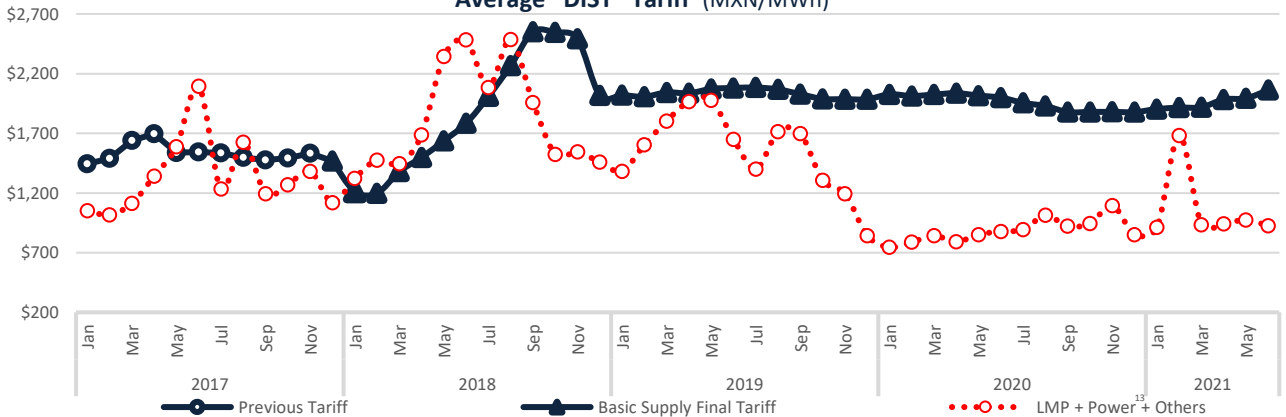
### Exchange rate<sub>f</sub> (MXN/USD)



### Crude Oil Average Price (USD/bbl)



### Average "DIST" Tariff (MXN/MWh)



Disclaimer: "The information contained in this Newsletter is a compilation of data obtained by Fistera Energy that has not been independently verified. Therefore, none of the companies of Fistera Energy Group executes or grants any representation or guarantee, expressed or implied, in relation to the accuracy or integrity of such information, so the receiver must always make his own evaluations and analyses."

## CDMX

Edificio Terret. Torre Norte  
Miguel de Cervantes Saavedra 301  
Col. Granada, 11520  
Tel: +52 55 5125 1670  
info@fisteraenergy.com