

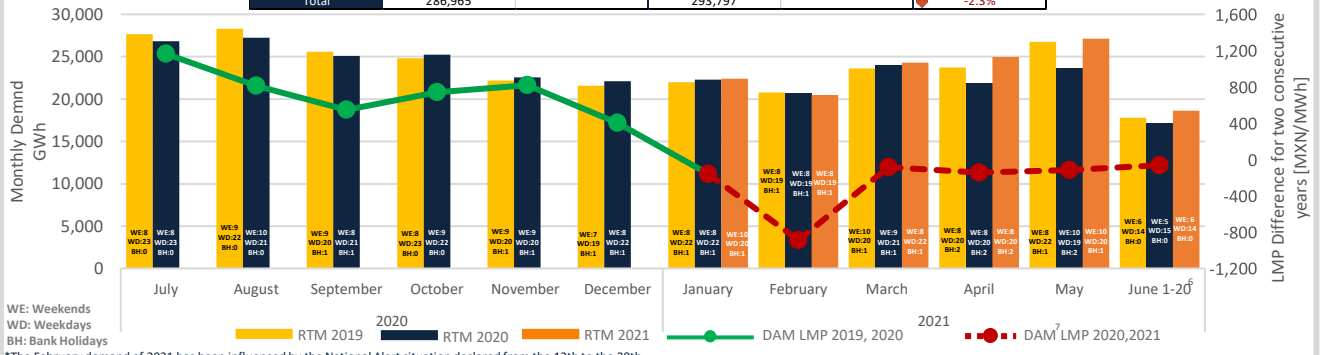
Market Summary

- On June 16th was published on SENER's website, the statistics compendium for May 2021.
- On June 16th was published on the private MEMSIM a notification related to the summer prices, which exhorts the market participants to increase their guaranteed payment amount, derived of the general increase in the LMP due to summer season for Baja California system.
- On June 17th CFE announced an investment of 48,572 million pesos between 2021 and 2025 for strengthen the transmission and distribution lines.

Comparative analysis of electrical energy demand in RTM¹ between 2021, 2020 and 2019 for SIN²

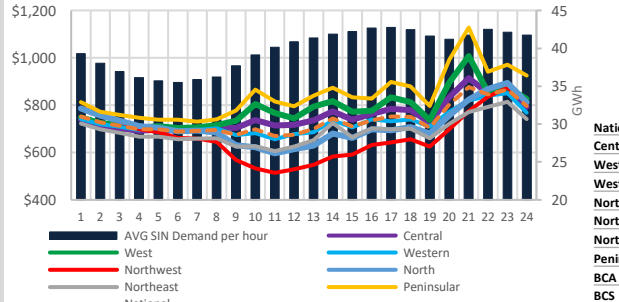
Month	RTM Demand 2021 [GWh]	Monthly demand variation 2021 ³	RTM demand 2020 [GWh]	Monthly demand variation 2020 ⁴	Demand variation 2021/2020
January	22,416	↑ 1.3%	22,310	↑ 3.4%	↑ 0.5%
February	20,490	↑ 1.2%	20,661	↑ 2.5%	↓ -0.8%
March	24,314	↑ 7.2%	24,072	↑ 5.2%	↑ 1.0%
April	24,988	↑ 6.2%	21,879	↓ -6.1%	↑ 14.2%
May	27,135	↑ 5.1%	23,638	↑ 4.6%	↑ 14.8%
June 01-20 ⁶	18,632	↑ 6.4%	17,114	↑ 12.2%	↑ 8.9%
Total	137,974		129,673		↑ 6.40%

Month	RTM Demand 2020 [GWh]	Monthly demand variation 2020 ³	RTM demand 2019 [GWh]	Monthly demand variation 2019 ⁴	Demand variation 2020/2019
January	22,310	↑ 3.4%	21,983	↑ 3.6%	↑ 1.5%
February ⁵	20,661	↑ 2.5%	20,798	↑ 4.7%	↓ -0.7%
March	24,072	↑ 5.2%	23,620	↑ 2.6%	↑ 1.9%
April	21,879	↓ -6.1%	23,738	↑ 3.8%	↓ -7.8%
May	23,819	↑ 5.4%	26,763	↑ 9.1%	↓ -11.0%
June	25,110	↑ 8.9%	26,734	↑ 3.2%	↓ -6.1%
July	26,819	↑ 3.4%	27,660	↑ 0.1%	↓ -3.0%
August	27,265	↑ 1.7%	28,317	↑ 2.4%	↓ -3.7%
September	25,085	↓ -4.9%	25,588	↓ -6.6%	↓ -2.0%
October	25,247	↓ -2.6%	24,830	↓ -6.1%	↑ 1.7%
November	22,577	↓ -7.6%	22,198	↓ -7.6%	↑ 1.7%
December	22,122	↓ -5.2%	21,569	↓ -6.0%	↑ 2.6%
Total	286,965		293,797		↓ -2.3%



¹The February demand of 2021 has been influenced by the National Alert situation declared from the 13th to the 20th.

Regional⁸ hourly LMP week June 14th to 20th (MXN/MWh)_a



LMP from Monday to Friday from June 14th to 18th

Range	Average \bar{x}	Standard Deviation σ	Variation Coefficient $v.c. = \sigma/\bar{x}$	
MXN	533	744	77	10%
Central	500	759	81	11%
West	584	780	99	13%
Western	525	741	72	10%
Northwest	743	668	112	17%
North	685	729	96	13%
Northeast	542	709	81	12%
Peninsular	670	831	121	15%
BCA	10,168	1,686	2,009	119%
BCS	4,288	5,695	874	15%

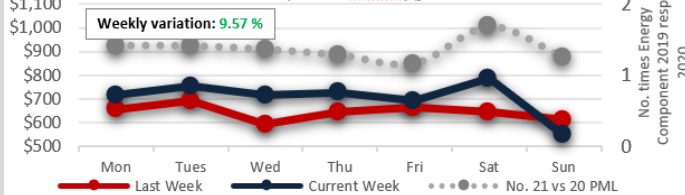
LMP (maximum price hours)⁹ from Monday to Friday from June 14th to 18th

Range	Average \bar{x}	Standard Deviation σ	Variation Coefficient $v.c. = \sigma/\bar{x}$	
MXN	514	774	89	11%
Central	497	782	92	12%
West	584	799	110	14%
Western	516	765	83	11%
Northwest	672	730	116	16%
North	622	777	106	14%
Northeast	520	737	86	12%
Peninsular	656	861	127	15%
BCA	9,966	2,430	2,535	104%
BCS	3,718	6,245	832	13%

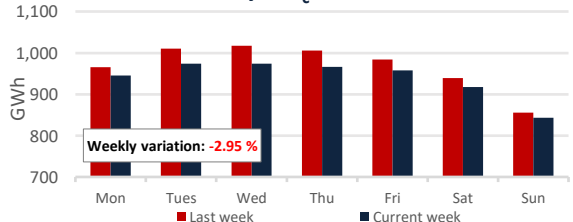
LMP (minimum price hours)¹⁰ from Monday to Friday from June 14th to 18th

Range	Average \bar{x}	Standard Deviation σ	Variation Coefficient $v.c. = \sigma/\bar{x}$	
MXN	233	714	50	7%
Central	265	737	61	8%
West	354	761	84	11%
Western	245	716	47	7%
Northwest	258	605	65	11%
North	249	680	50	7%
Northeast	407	680	66	10%
Peninsular	489	801	108	13%
BCA	4,496	942	768	81%
BCS	2,937	5,144	483	9%

LMP Energy Component SIN¹¹ Weekly (MXN/MWh)_b

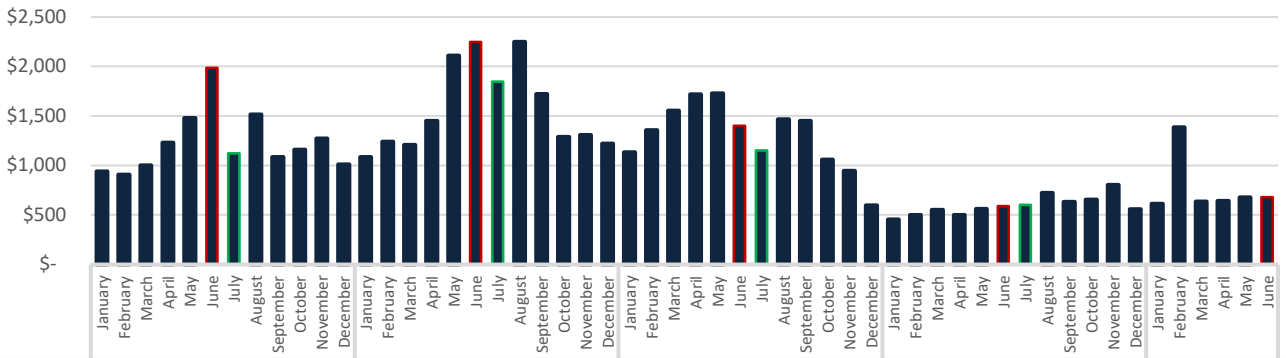


Weekly SIN_c RTM Demand

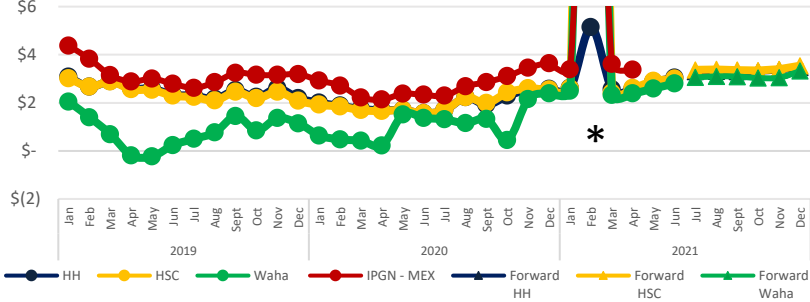


Source: Real demand (EnergyWidow) - <https://www.cenace.gob.mx/SIM/VISTA/REPORTES/DemandasRealEst.aspx>
 1. Real Time Market
 2. National Interconnected System
 3. Average Monthly Demand
 4. Only 28 days for February 2020 are considered
 5. Only 28 days for February 2021 are considered
 6. Only 20 days for June 2021 are considered
 7. Day Ahead Market
 8. Data from the National Interconnected System (not 08C02-345)
 9. Average LMP for the maximum hours, including the 12 hours with the highest price (from HE.16 to HE.3)
 10. Average LMP for the minimum hours, including the 6 hours with the lowest price (from HE.4 to HE.15)
 11. Local Marginal Price (PWL in Spanish)
 Source: demand: <https://www.cenace.gob.mx/Grafica/Demanda>
 System real demand for withdrawals: <https://www.cenace.gob.mx/SIM/VISTA/REPORTES/DemandasRealEst.aspx>

Historical LMP SIN (MXN/MWh)_d



Historical Natural Gas Price & Forward_e (USD/MMBtu)



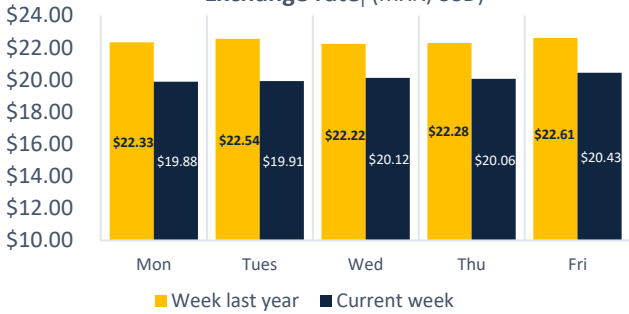
The natural gas index price provided by the CRE for the month of April 2021¹² was \$3.38 USD/MMBtu.

The prices for Henry Hub (HH) and Houston Ship Channel (HSC) were \$3.10 USD/MMBtu and \$3.06 USD/MMBtu respectively, for may. The price for Texas Waha was \$2.86 USD/MMBtu for the same period.

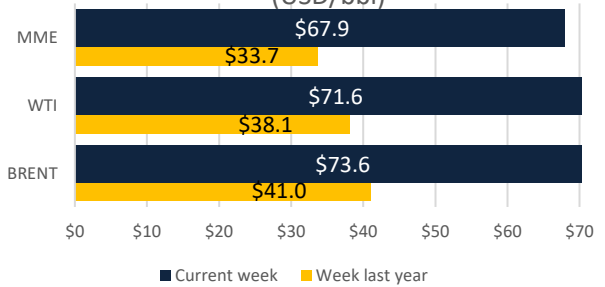
The Mexican Export Crude-oil Blend (MME) had an average of \$67.9 USD/bbl, 7.7 % less than the one from North Sea (Brent) and 5.2 % less than West Texas Intermediate (WTI).

*feb-21	Average (\$/MMBtu)	Max (\$/MMBtu)	Min (USD/MMBtu)
Waha	34.64	208.79	2.38
HSC	57.46	400	2.43

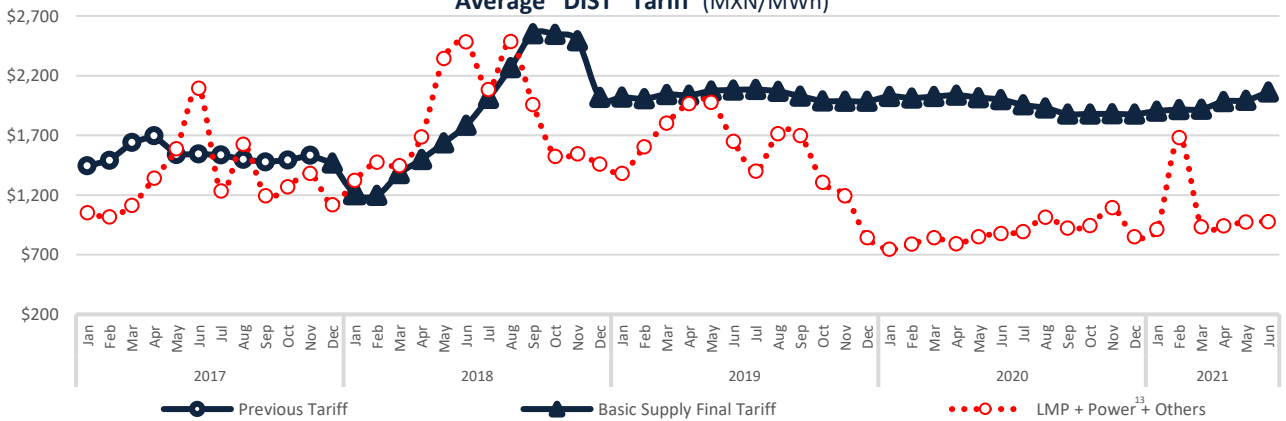
Exchange rate_f (MXN/USD)



Crude Oil Average Price (USD/bbl)



Average "DIST" Tariff (MXN/MWh)



Disclaimer: "The information contained in this Newsletter is a compilation of data obtained by Fistera Energy that has not been independently verified. Therefore, none of the companies of Fistera Energy Group executes or grants any representation or guarantee, expressed or implied, in relation to the accuracy or integrity of such information, so the receiver must always make his own evaluations and analyses."

CDMX

Edificio Terret. Torre Norte
Miguel de Cervantes Saavedra 301
Col. Granada, 11520
Tel: +52 55 5125 1670
info@fisteraenergy.com