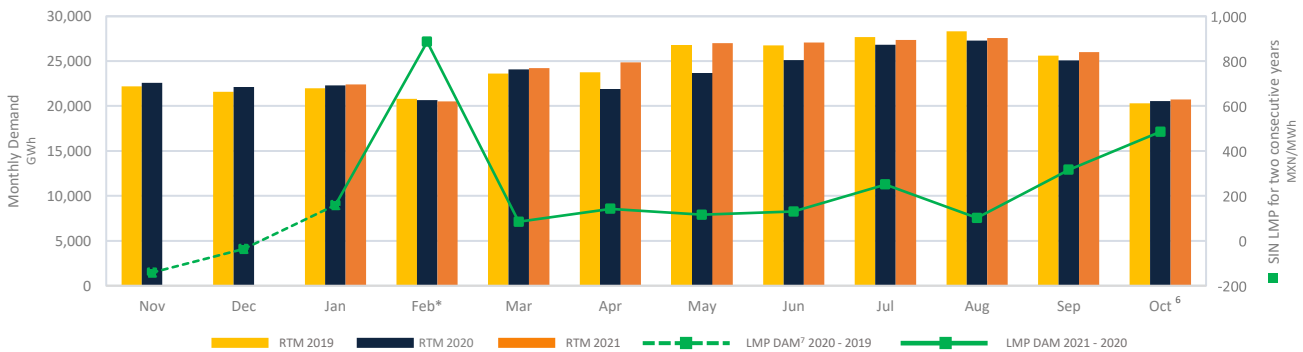


Market Summary

- On November 06th at COP26, private institutions and governments pledge urgent action and investment to protect nature and shift to more sustainable ways of farming and land use.
- On November 04th at COP26, at least 23 countries made new commitments to phase out coal power under the 'Global Coal to Clean Power Transition Statement'.
- On November 04th was published at the Private Site of MEMSIM a release which establishes complementary information related to estimated aggregate responsibility.
- On November 03rd at COP26, Finance Ministers and International Finance Institutions discussed strategies to get public and private investment to achieve Net Zero goal.
- On November 01st, around 120 leaders came together in Glasgow to keep negotiations and establish new strategies in order to avoid a temperature increase higher than 1.5°C.

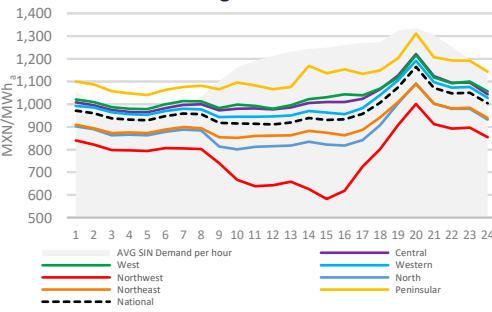
Comparative analysis of electrical energy demand in RTM¹ between 2021, 2020 and 2019 for SIN²

Month	RTM 2021			RTM 2020			RTM 2019		
	[GWh]	Variation 2021 ³		[GWh]	Variation 2020 ⁴		[GWh]	Variation 2019 ⁴	Variation 2020/2019
January	22,410	↑ 1.4%		22,310	↑ 3.4%		22,310	↑ 3.4%	↑ 1.5%
February ⁵	20,511	↑ 1.3%		20,661	↑ 2.5%	↓ -0.7%	20,661	↑ 2.5%	↓ -0.7%
March	24,216	↑ 6.6%		24,072	↑ 5.2%	↑ 0.6%	24,072	↑ 2.6%	↑ 1.9%
April	24,845	↑ 6.0%		21,879	↓ -6.1%	↑ 13.6%	21,879	↓ -6.1%	↓ -7.8%
May	27,007	↑ 5.2%		23,638	↑ 4.6%	↑ 14.3%	23,638	↑ 4.6%	↓ -11.7%
June	27,072	↑ 3.6%		25,110	↑ 9.8%	↑ 7.8%	25,110	↑ 9.8%	↓ -6.1%
July	27,336	↓ -2.3%		26,819	↑ 3.4%	↑ 1.9%	26,819	↑ 3.4%	↓ -3.0%
August	27,565	↑ 0.8%		27,265	↑ 1.7%	↑ 1.1%	27,265	↑ 1.7%	↓ -3.7%
September	25,984	↓ -2.6%		25,085	↓ -4.9%	↑ 3.6%	25,085	↓ -4.9%	↓ -2.0%
October ⁶	20,735	↓ -4.2%		20,563	↓ -1.6%	↑ 0.8%	25,238	↓ -2.6%	↑ 1.6%
November							22,570	↓ -7.6%	↑ 1.7%
December							22,110	↓ -5.2%	↑ 2.5%
Total	247,682			237,401	↑ 4.3%		286,756		↓ -2.4%



*The February demand of 2021 has been influenced by the National Alert situation declared from the 13th to the 20th.

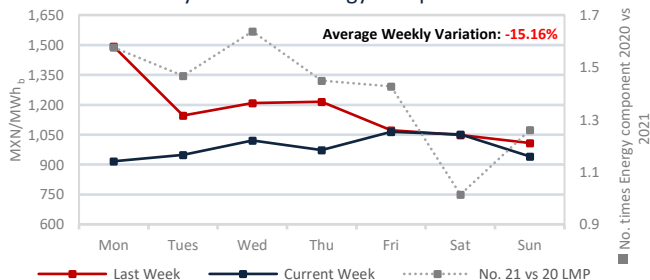
Regional⁸ LMP*



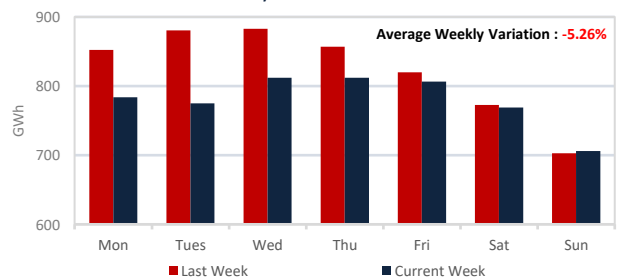
	LMP*				LMP* Maximum Price LMP ⁹				LMP* Minimum Price ¹⁰			
	Range	Average	Standard Deviation	Variation Coefficient	Range	Average	Standard Deviation	Variation Coefficient	Range	Average	Standard Deviation	Variation Coefficient
National	994	967	110	11%	994	1,005	131	13%	248	929	65	7%
Central	1,088	1,024	119	12%	1,088	1,059	142	13%	296	989	77	8%
West	1,098	1,039	123	12%	1,098	1,072	145	14%	318	1,007	86	9%
Western	1,027	994	114	11%	1,027	1,029	135	13%	269	958	72	8%
Northwest	1,194	738	156	21%	1,056	803	145	18%	585	674	140	21%
North	917	880	105	12%	852	922	123	13%	268	838	60	7%
Northeast	903	904	99	11%	903	937	120	13%	214	871	57	7%
Peninsular	1,190	1,133	147	13%	1,175	1,170	165	14%	441	1,095	115	11%
BCA	2,368	1,268	489	39%	2,362	1,420	569	40%	1,641	1,115	333	30%
BCS	3,459	3,935	1,104	28%	3,402	4,720	936	20%	2,014	3,150	573	18%

*Hourly average from Monday to Friday (November 01-05 2021)

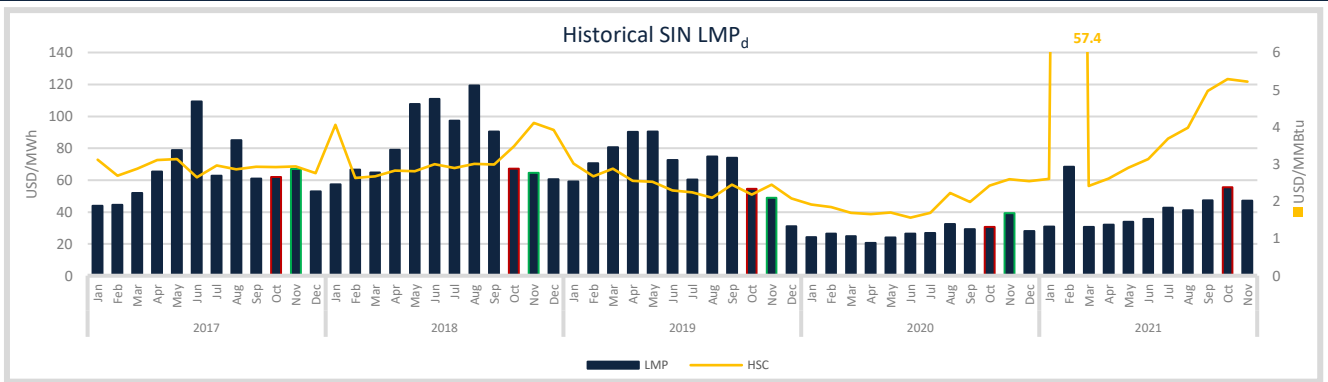
Weekly SIN LMP¹¹ Energy Component



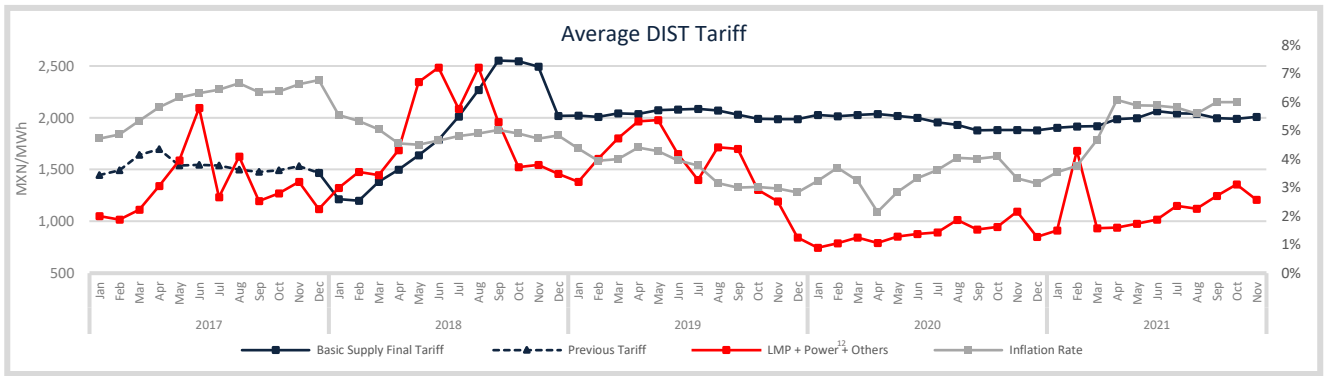
Weekly SIN^c RTM Demand



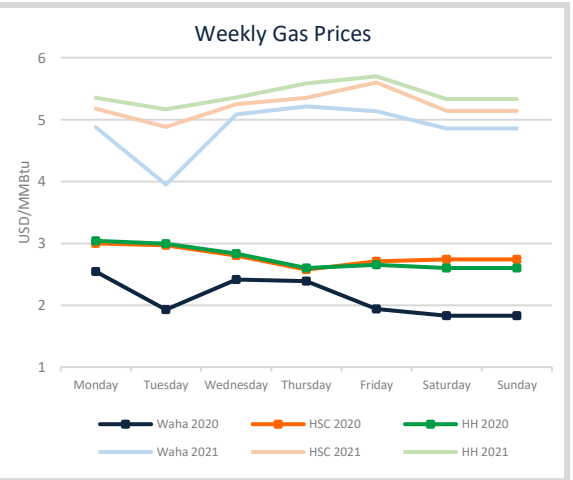
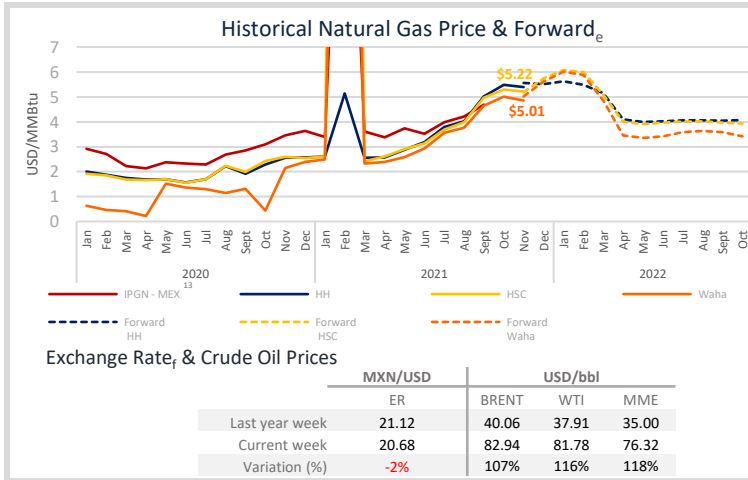
1: Real Time Market
 2: National Interconnected System
 3: Average Monthly Demand
 4: Only 28 days for February 2020 are considered
 5: The data until October 25th (2020 and 2021) belongs to Real demand (Energy Withdrawals): https://www.cenace.gob.mx/SIM/VISTA/REPORTES/DemandRealSit.aspx
 6: 7-Day Ahead Market
 7: Day Ahead Market
 8: Data from the National Interconnected System (not BCS/CS/SA/SE)
 9: Average LMP for the minimum hours, including the 12 hours with the highest price (from HE 16 to HE 3)
 10: Average LMP for the minimum hours, including the 6 hours with the lowest price (from HE 4 to HE 11)
 11: Local Marginal Price (PML, in Spanish): https://www.cenace.gob.mx/Gadad/DemandaSystemRealDemandForWithdrawals: https://www.cenace.gob.mx/SIM/VISTA/REPORTES/DemandRealSit.aspx



d: Source: <https://www.cemex.com.mx/SIM/VISTA/REPORTES/PreEnergySAMEMA>
SPX



12: From Power Market Price - 2017-2018 & 2019: (The Capacity Balancing Market 2020 results are considered for 2021).

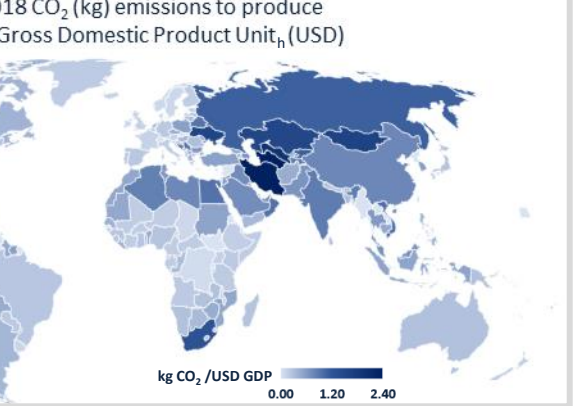
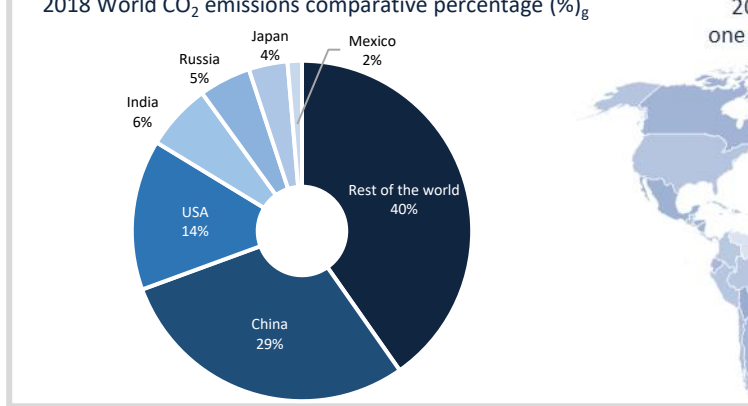


f: <https://www.banxico.org.mx/portal-mercado-cambiarlo/index.html>
13: IPGN for the months subsequent to June 2021, has not been published.
e: <http://www.wsj.com>

Exchange Rate_f & Crude Oil Prices

	MXN/USD		USD/bbl		
	ER		BRENT	WTI	MME
Last year week	21.12		40.06	37.91	35.00
Current week	20.68		82.94	81.78	76.32
Variation (%)	-2%		107%	116%	118%

International Energy Markets



g: <https://www.eia.gov/international/data/world>
h: <https://www.bancomundial.org/es/home>

Disclaimer: "The information contained in this Newsletter is a compilation of data obtained by Fistera Energy that has not been independently verified. Therefore, none of the companies of Fistera Energy Group executes or grants any representation or guarantee, expressed or implied, in relation to the accuracy or integrity of such information, so the receiver must always make his own evaluations and analyses."

CDMX

Edificio Terret. Torre Norte
Miguel de Cervantes Saavedra 301
Col. Granada, 11520
Tel: +52 55 5125 1670
info@fisteraenergy.com